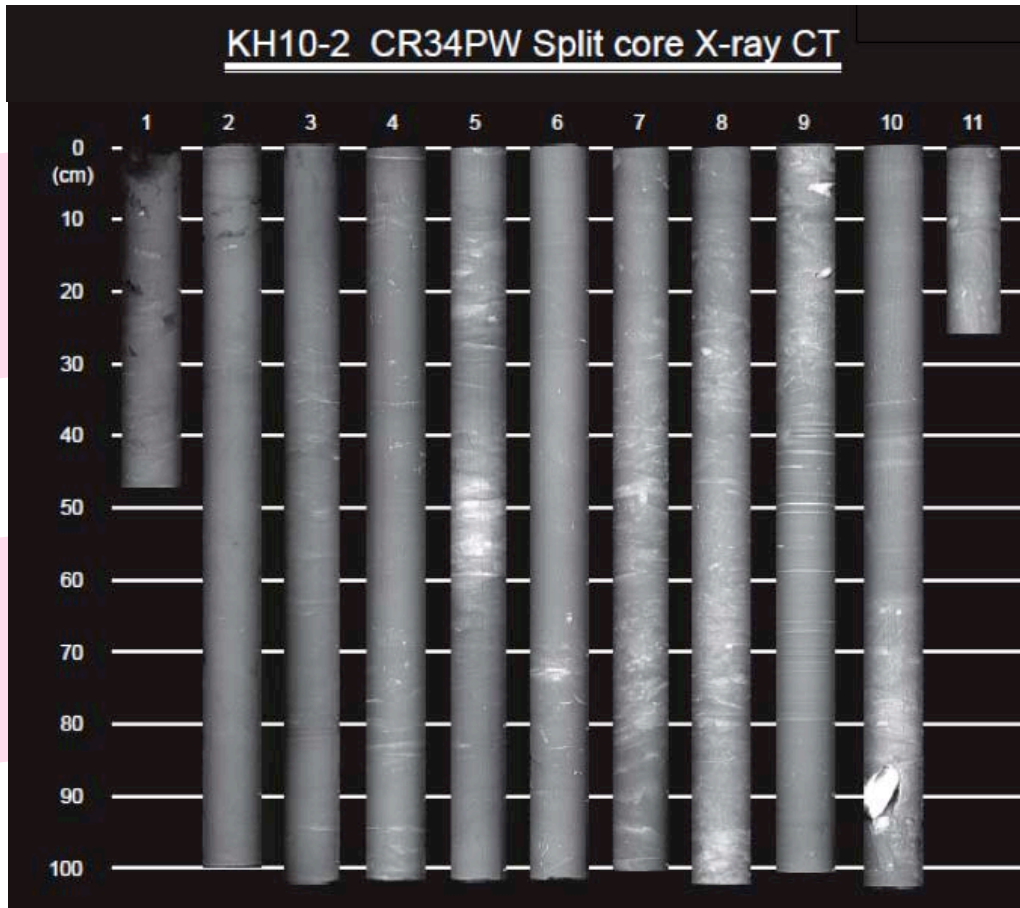


*"2011 Kochi International Symposium on
Paleoceanography and Paleoenvironment
in East Asia"*



X-Ray CT Image of piston core off Hokkaido

2 – 3 March 2011

Center for Marine Core Research, Kochi University



Schedule and Program:

"2011 Kochi International Symposium on Paleoceanography and Paleoenvironment in East Asia"

Venue and Date;

The symposium will take place for two days, 2 and 3 March, 2011, at the Center for Marine Core Research, Kochi University.

Program

Wednesday March 2

12:00-13:00 Registration

13:20-13:30 Welcome and Logistics

Keynote Speaker I

13:30-14:00 Ryuji TADA (Univ. of Tokyo, Japan)

Change in millennial-scale tele-connection of East Asian Monsoon and North Atlantic climate between glacial and interglacial boundary conditions

Keynote Speaker II

14:00-14:30 Andrew ROBERTS (Australian National Univ., Australia)

Environmental magnetism and monsoon dynamics

14:30-14:45 Break

14:45-15:05 Ken IKEHARA and Kazuko USAMI (Geological Survey of Japan, AIST, Japan)

Various time-scale East Asian monsoon influence to the late Quaternary Japan Sea paleoenvironments

15:05-15:25 Sangmin HYUN and Jin-Kyung KIM (KORDI, Korea)

Stable oxygen isotope in foraminifera and diatom from the East/Japan Sea sediment: implications for global paleoclimate synchronicity and local paleoceanography

15:25-15:45 Takuya SAGAWA, Kentaro TSURUOKA, Michinobu KUWAE, Hidetaka TAKAOKA (Ehime Univ., Japan), Masafumi MURYAMA, Kei OKAMURA (Kochi Univ., Japan)

Holocene millennial-scale variability in the East Asian winter monsoon deduced from the subarctic western North Pacific SST

15:45-16:30 Introduction of poster presentations (1 min. talk)

Poster 1 Jimbee HEO (Pusan National Univ., Korea), Chieko SHIMADA (Akita Univ., Japan), Masao.UCHIDA (NIER, Japan), Ken IKEHARA (AIST, Japan), Ryuji TADA (Univ. of Tokyo, Japan), and Boo-Keun KHIM (Pusan National Univ., Korea)

Surface-water condition at the path of Tsushima Warm Current in the southeastern East Sea/Japan Sea during the last glacial and deglacial periods

Poster 2 Hirofumi ASahi (AORI, Univ. of Tokyo, Japan), S. Kender (British Geological Survey, UK.), Minoru IKEHARA (Kochi Univ., Japan), Tatsuhiko SAKAMOTO (JAMSTEC, Japan), Kozo TAKAHASHI (Kyushu Univ., Japan) and IODP Exp. 323 Ship Board Scientists

Foraminiferal oxygen and carbon isotope record during last 2.1 Myrs at the Northern Slope of the Bering Sea

16:30-16:40 Break

16:40-17:00 Akira HAYASHIDA (Doshisha Univ., Japan)

Evolution of the East Asian monsoon inferred from environmental magnetic record from Lake Biwa, central Japan

17:00-17:20 Kyung-Hoon SHIN and Suk-Hee YOON (Hanayng Univ., Korea), Masanobu YAMAMOTO (Hokkaido Univ., Japan), Hi-Il YI (KORDI, Korea)

Characterization of modern sediment and its possible application for plaeoceanography in the Yellow Sea and Northern East China Sea

17:20-17:40 Yurika UJIIE (Kochi Univ., Japan) and Thibault de GARIDEL-THORON (CEREGE, France)

Genetic divergence of planktic foraminifer related to the evolution of the Western Pacific Warm Pool

18:30-20:30 Banquet

Thursday March 3

Keynote Speaker III

09:00-09:30 Yusuke OKAZAKI (JAMSTEC, Japan)

Toward an understanding the role of the North Pacific in global ocean circulation

09:30-09:50 Boo-Keun KHIM (Pusan National Univ., Korea), K. IKEHARA (AIST, Japan), T. SAGAWA (Ehime. Univ., Japan), K. OHKUSHI (Kobe Univ., Japan), A. SHIBAHARA (AIST, Japan), and M. YAMAMOTO (Hokkaido Univ., Japan)

Paleoceanographic changes in the subarctic Northwest Pacific during the last deglaciation

09:50-10:10 Katsunori KIMOTO (JAMSTEC, Japan)

Bottom water hydrography in the Okhotsk Sea during the last 30,000 years: Evidence from foraminiferal isotopes and trace metals

10:10-10:30 Keiji HORIKAWA (Univ. of Florida, Univ. of Toyama, Japan), E.E. MARTTIN, C. BASAK (Univ. of Florida, U.S.A), J. ONODERA, T. SAKAMOTO (JAMSTEC, Japan) and IODP 323 Scientific party

Plio-Pleistocene cryospheric history of Alaska based on Nd and Pb isotopes of detrital sediments

10:30-10:50 Break

10:50-11:10 Masanobu YAMAMOTO, Hirotaka SAI (Hokkaido Univ., Japan), and Min-Te CHEN (National Taiwan Ocean Univ., Taiwan)

Response of the Asian winter monsoon to precessional forcing: evidence from the sea surface temperature records from the South China Sea

11:10-11:30 Seung-II NAM (KIGAM, Korea)

Recent global warming and its proxies from the western Arctic Ocean

11:30-11:50 Tomohisa IRINO (Hokkaido Univ., Japan)

Color variability of sediment core samples collected around Japan: Finding suitable color indices for paleoceanography

11:50-12:20 Discussion & Closing

Contact:

Masafumi MURAYAMA

Center for Advanced Marine Core Research,
Kochi University

B200 Monobe Nankoku, 783-8502, Japan

TEL : 088-864-6718

Email : murayama@kochi-u.ac.jp

<http://www.kochi-u.ac.jp/marine-core/>