

FY2025 Application Guidelines for
Joint Use/Research Center for Drilling Earth Science”
Marine Core Research Institute, Kochi University

Marine Core Research Institute, Kochi University (MaCRI, hereafter) operates the Joint Usage/Research Center for Drilling Earth Science (JURC-DES, hereafter). The purpose of JURC-DES is to promote the advancement of Drilling Earth Science and related fields by encouraging researchers to utilize its state-of-the-art research facilities and sediment cores. To further this objective, JURC-DES is calling for applications for research projects for the fiscal year 2025 as follows:

- 1) Categories (Please also refer to the table provided on page 2)
 - (A) **Joint Use Program:** Research projects that utilize the analysis equipment (*1) managed by MaCRI. No faculty members of MaCRI (who are full-time faculties excluding specially-appointed lecturers) (*2) is included in the applicants' research partners or groups.
 - (AY) **Joint Use Program (for Early Careers):** Applicants for the Joint Use Program (A) who are 35 years old and younger as of April 1st, 2025.
 - (B) **Joint Research Program (Equipment Usage):** Research projects that utilize the analysis equipment (*1) managed by MaCRI. Faculty members of MaCRI, excluding specially-appointed lecturers (*2), will serve as “co-investigators” for the applicants. This includes research projects adopted by competitive research funds such as Grants-in-Aid for Scientific Research, or *KAKENHI*. It is recommended that applicants utilize sediment cores curated at MaCRI (not a mandatory requirement).
 - (BY) **Joint Research Program (for Early Careers):** Applicants for the Joint Use Program (B) who are 35 years old and younger as of April 1st, 2025.
 - (C): **Joint Research Program (General):** Research projects that do not utilize the analysis equipment (*1) managed by MaCRI. Faculty members of MaCRI, excluding specially-appointed lecturers (*2), will serve as “co-investigators” for the applicants. This includes research projects adopted by competitive research funds such as Grants-in-Aid for Scientific Research, or *KAKENHI*.

(*1) Please refer to the List of Primary Facilities for JURC-DES (Item 3)

(*2) Please refer to the following URL for MaCRI Faculty Members

<https://www.kochi-u.ac.jp/marine-core/en/about/member.html>

Joint Usage/Research Center for Drilling Earth Science

Overview of Applications for Joint Use, Joint Research, and Research Meeting

	A Joint Use	AY Joint Use (Early Career)	B Joint Research (Equipment Usage)	BY Joint Research (Equipment Usage) (Early Career)	C Joint Research (General)	M Research Meeting
Primary Applicants	Not belong to MaCRI (Domestic Residence)	Not belong to MaCRI (Domestic Residence) (35 y.o. or under)	Not belong to MaCRI (Domestic Residence)	Not belong to MaCRI (Domestic Residence) (35 y.o. or under)	Not belong to MaCRI (Domestic Residence)	Not belong to MaCRI (Domestic Residence)
Collaborator at MaCRI	×	×	○ Collaborator	○ Collaborator	○ Collaborator	○ Respective persons
Equipment Usage	○	○	○	○	×	×
Utilizing Sediment Cores curated at MaCRI	×	×	△	△	△	×
Application Period	February August	February August	February August	February August	February August	February
Research Period	Half of the year (First or Second Semester) or 1 year (2 semesters)	Half of the year (First or Second Semester) or 1 year (2 semesters)	Half of the year (First or Second Semester) or 1 year (2 semesters)	Half of the year (First or Second Semester) or 1 year (2 semesters)	Half of the year (First or Second Semester) or 1 year (2 semesters)	—
Cost for Equipment Usage	Free	Free	Free	Free	—	—
Research Grant from MaCRI	None	Paying travel expense /per research project (1 time a year)	None	Paying travel expense /per research project (1 time a year)	None	• Meeting operating expense • A part of travel expense

○: Required, △: Recommended, ×: No need

2) Eligible Research Projects

Research projects relating to the following research fields:

- a) Research projects on Drilling Earth Science regarding International Ocean Discovery Project (IODP) and International Continental Scientific Drilling Program (ICDP)
- b) Research projects on Drilling Earth Science NOT regarding IODP/ICDP
- c) Basic research on Earth Planetary Science
- d) Research projects on submarine energy and mineral resources
- e) Interdisciplinary research such as Earth Planetary Science, Life Science, or others

3) Equipment and Facility Usage:

Please refer to the “The List of Primary Facilities for JURC-DES” available on the MaCRI website (*3) to check which research instruments could be utilized.

The Kochi Core Center Open Facility System (KOFS, hereafter) (*4) allows applicants to use several fee-based facilities managed by the Japan Agency for Marine-Earth Science and Technology (JAMSTEC, hereafter). If applicants wish to use KOFS, they should **consult with the respective persons in charge**.

Applicants should also refer to the “Facility Usage Guidelines for Joint Use and Joint Research at Marine Core Research Institute, Kochi University” and adhere to the instructions provided by the MaCRI Director when utilizing the research facilities.

Please note that the research equipment and facilities managed by MaCRI and JAMSTEC are jointly operated under KOFS. This is an initiative of the Project for

Promoting Public Utilization of Advanced Research Infrastructure, funded by the Ministry of Education, Sports, Science, Culture, and Technology.

(*3) <https://www.kochi-u.ac.jp/marine-core/share/national.html>

(*4) https://www.kochi-core.jp/kyoyo/en/index_e.html

4) Research Period

[First Semester]

Specific periods between April 1st and September 30th, 2025

[Second Semester]

Specific periods between October 1st, 2025 and March 31st, 2026

5) Eligibility

a) Researchers affiliated with universities or research institutes (including graduate students)

b) Individuals deemed suitable by the MaCRI Director

NOTE: Graduate students are eligible to be applicants and collaborators, while undergraduate students are not.

6) Application Method (Please refer to the Application Flow Chart):

Applicants are required to consult with the respective persons in charge of A and AY or co-investigators (B, BY, and C), about their applications and prepare the FY2025 Application Documents.

AB1 style: A_Joint Use Program, AY_Joint Use Program (for Early Career), B_Joint Research (Equipment Usage), BY_Joint Research (Equipment Usage for Early Career)

Attached for AB1 style – ITRAX Machine Time Arrangement Questionnaire: If applicants require the use of the “XRF Core Scanner (ITRAX)” in the above categories, please attach the questionnaire. ITRAX receives many applications compared to its limited availability. Therefore, applicants must provide information about “preferred number of days for use” and also submit this attached questionnaire to indicate their minimum required periods for its usage.

C1 style: Joint Research Program (General)

Applicants are required to send all application documents to the secretariat at the following email address, with the subject line “Application for Joint Use/Research Program.” The Secretariat will contact applicants to confirm receipt of the application.

[Email address]

The Secretariat of JURC-DES at Marine Core Research Institute, Kochi University

Email: core-kyodo@kochi-u.ac.jp

NOTES : Applicants of the approved research projects are required to submit a consent form signed by their supervisor.

7) Notes for Application Documents Preparation

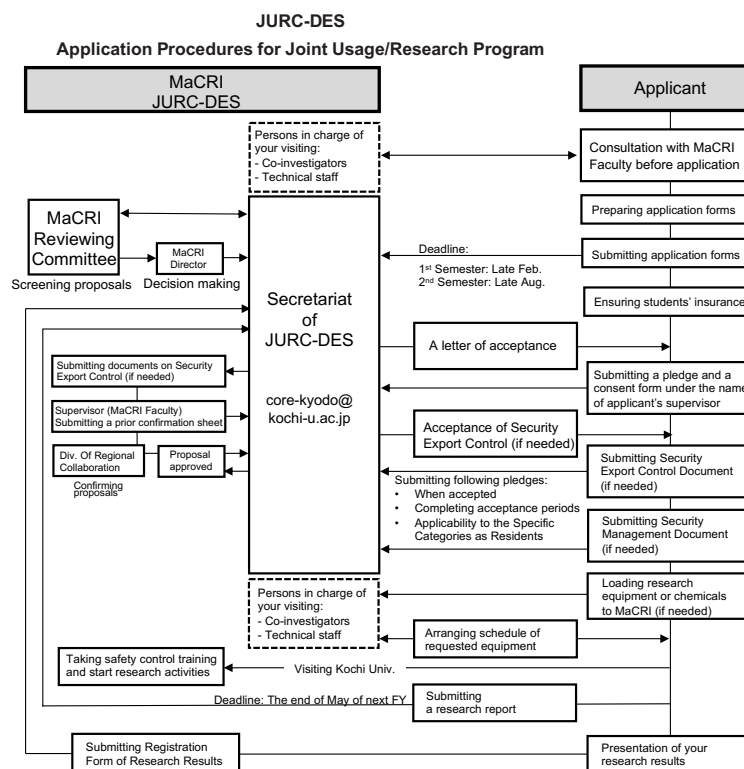
- Applicants are required to provide detailed descriptions of their research projects, in accordance with Grants-in-Aid for Scientific Research, or *KAKENHI*. If the applicants are graduate students, they should seek their supervisor's support to prepare the applications.
- 2. Applicant Details: If an applicant's research project is a continuation of a previous project under the same title, please choose "continuation project." Even if research projects have been suspended for approximately half a year or two years, JURC-DES recognizes them as "continuous" projects.
- 4. Sample Information: Applicants are required to provide detailed information about the samples analyzed using research equipment at MaCRI. This is fundamental information for determining the appropriateness of equipment usage and the machine time for each piece of equipment. Applicants are also required to provide information confirming whether they have obtained permissions for each sample from the respective owners. This is an essential standard to prevent improper research practices. Please refer to the following lists for information regarding sample owners.
 - Samples obtained by researchers: Name of individual researchers
 - Samples obtained by research expeditions conducted by research vessels owned by JAMSTEC: JAMSTEC
 - Marine Sediment Core Samples obtained by *Chikyu*: JAMSTEC
 - Marine Sediment Core Samples obtained by JOIDES Resolution: NSF
 - Marine Sediment Core Samples obtained by Mission Specific Platform: ESO (ECORD Science Operator)

8) Legal Compliance

If samples are protected under regulations or laws (including biological samples), applicants are required to refer to the "Laws and Regulations" section and select appropriate items.

For example:

1. Fauna, flora, and processed goods (such as corals, giant clam, or ivory) protected under the Washington Treaty. For more information, refer to the following related website:
https://www.meti.go.jp/english/policy/external_economy/CITES/index.html
2. Geological and biological samples, such as rocks, minerals, and living organisms, collected in areas designated as World Heritage Sites, National Historic Sites, Scenic Sites, and Natural Monuments
3. Geological and biological samples such as rocks, minerals, and living organisms, collected in areas of National/Quasi-National Park or Special Protection Zones
4. Applicants must adhere to the “Convention on Biological Diversity” and the “Nagoya Protocol” with respect to access to genetic resources and access and benefit-sharing, especially when using genetic resources from overseas. Research projects in the field of biology that use marine sediment cores (those collected in exclusive economic zones) or soil samples collected overseas are subjected to the Nagoya Protocol. For more information, refer to the related website:
<https://www.cbd.int/abs>
5. Samples (such as soil samples) related to the Plant Protection Act Chapter 7
For more information, refer to the related website:
https://www.maff.go.jp/pps/j/information/language_top.html



9) Application Period

Applicants must submit Style AB1 (and Style AB1 Attachment – ITRAX Machine Time Arrangement Questionnaire) or Style C1 documents before the deadline.

[For First Semester Only /Both First and Second Semesters]

The application period:

From Monday, February 3, 2025 to Friday, February 28, 2025, by 5:00 PM

[For Second Semester Only]

The application period:

From Friday, August 1, 2025 to Friday August 29, 2025, by 5:00 PM (*5)

If applicants wish to submit the application documents outside of these periods, they should submit the all-year-round application form (*5). It will be evaluated based on its academic and educational necessity and urgency. It also must be submitted at least one month prior to the research periods. Style AB3

*5: If the total number of days operating the “XRF Core Scanner (ITRAX)” exceeds the determined maximum period (50% of the total business days) by the February application, new applications will not be accepted as the August application. (If applicants need to use the “XRF Core Scanner (ITRAX)” in the second semester, they are recommended to apply for the category of 1st and 2nd semesters.)

10) Adoption or Rejection (Referring to the Application Flow Chart)

The MaCRI Reviewing Committee screens all research projects, and the MaCRI Director determines the results. Each applicant will receive their results via email.

[For First Semester Only /Both First and Second Semesters]

Results will be shared at late March 2025.

[For Second Semester Only]

Results will be shared at late September 2025.

[AB3 Application] Appropriately three weeks after the secretariat accepts the application

Selected applicants are required to submit a pledge and a consent form signed by their supervisors after receiving a letter of acceptance from JURC-DES.

Selected applicants are required to determine the date and time for equipment usage at MaCRI by consulting with the respective persons (A and AY) or co-investigators (B, BY, C). If the selected projects cannot be conducted according to the planned schedule, please contact the secretariat with written documents explaining

the reasons.

Information about selected applicants, such as approved number, research title, applicant name, and affiliation, will be published on the MaCRI website. If there is an issue with public disclosure, please inform the secretariat.

11) Change Request

If applicants wish to modify any part of the research project, including the addition or alternation of individuals using the MaCRI facilities, they should consult with the respective persons (A and AY) or co-investigators (B, BY, C) and promptly submit a change request to the secretariat (The request may not be accepted due to reasons).

12) Expenses

All expenses related to the use of research facilities and the receipt of technology will essentially be free for the selected research projects. Selected applicants may need to cover costs for commodities related to research activities.

13) Travel Expenses

JURC-DES covers travel expenses, including accommodation fees, for selected applicants of the AY Joint Use Program for Earth Career and the BY Joint Research Program for Early Career, as needed. Please check the appropriate section on the Application Form (Style AB1) and provide details about the travel expenses support. Since the amount of support is limited, JURC-DES has established the following criteria:

- a) Travel expense subsidy is provided only once per fiscal year for one applicant. Same applicant with different research projects must not apply for the travel expense subsidy multiple times in the same fiscal year.
- b) Only the February and August applications can apply the travel expense subsidy, and AB3 applicants (the all-year-round application) are not eligible for it
- c) Only the applicant's travel expenses are covered
- d) The total cost must not exceed ¥100,000. Accommodation fees should reflect the actual expenses, and applicants should primarily use on-campus or similar accommodation facilities. No daily allowance will be paid.
- e) The maximum number of approvals for travel expenses will be around 20 in the fiscal year of 2025 (Not all applicants may be offered travel expenses). If the February application exceeds the maximum number, the August application might not be eligible for the travel expense subsidy.

14. Intellectual Property Right

All intellectual property rights shall, in principle, be vested in the institutions/organizations to which the applicants and equipment users belong, in accordance with the respective regulations concerning inventions. In instances where a MaCRI faculty member's intellectual contribution is recognized, it is incumbent upon the applicants to engage in discussions pertaining to the ownership of the rights. Should the research project of the applicant yield, or be anticipated to yield, inventions as delineated in Section 2, Chapter 1 of the Kochi University Regulations on Inventions, it is mandatory for the applicant to submit a report to the Secretariat. In the event that the institutions/organizations to which the equipment users belong undertake the application procedures for inventions themselves, it is incumbent upon them to submit a report to the Secretariat prior to the application for intellectual property rights pertaining to the relevant inventions.

NOTES:

Section 2, Chapter 1 of the Kochi University Regulations on Inventions defines “invention” as follows:

- An entity subject to a patent right is referred to as “invention”
- An entity subject to utility model rights is referred to as “device”
- An entity subject to a design right, a trademark right, layout design license, or a copyright of programs is referred to as “creation”
- An entity relating to variety registration rights is referred to as “breeding”
- An entity subject to know-hows is referred to as “conception”

15. Research Results (Please refer to the Application Flow Chart)

Applicants selected for the FY2025 Joint Use and Research Program are required to submit a research report in either **Style AB2** or **Style C2** to the Secretariat upon completion of the program, no later than May 29, 2026, by 5:00 PM. These research reports will be published in MaCRI's annual report and on its official website. Selected applicants are also required to submit a “Registration Form of Research Results (excel)” along with their research outcomes such as published papers, conference presentations, or degree theses. The form should be submitted with electronic data (PDF) or hard copies of these materials. The author's name, affiliation, co-authors, paper title, journal volume, and research number will be disclosed as achievements of MaCRI. Selected applicants may be invited to present their research results at symposiums organized by MaCRI.

【Acknowledgement】

Upon publication of the research results, it is required to appropriately acknowledge that the work was conducted in collaboration with JURC-DES, either as Joint Use or Joint Research. Some examples are shown below:

This study was performed under the cooperative research program of Marine Core Research Institute (MaCRI) , Kochi University

<Accept No.> (with the support of JAMSTEC)※.

*The Content within brackets should be included only when utilizing equipment marked with # in the List of Equipment for Joint Use/Research Program.

Please note that only research papers that include this acknowledgement will be recognized as JURC-DES achievements and will be subject to evaluation by MEXT. Therefore, it is imperative for applicants to ensure this acknowledgement is present in their papers.

16. Contact Information

The Secretariat of Joint Use and Research Center,
Marine Core Research Institute, Kochi University
B200, Monobe, Nankoku-shi, Kochi 7838502 JAPAN
TEL: 088-864-6712
Email: core-kyodo@kochi-u.ac.jp

Kochi University and JAMSTEC jointly manage a research facility known as the Kochi Core Center. The Joint Use and Joint Research Programs are operated in close collaboration with JAMSTEC.